

SPH calculations of asteroid disruptions: The role of pressure dependent failure models

Martin Jutzi^a

^a*University of Bern, Center for Space and Habitability, Physics Institute, Sidlerstrasse 5, 3012 Bern, Switzerland*

Abstract

We present recent improvements of the modeling of the disruption of strength dominated bodies using the Smooth Particle Hydrodynamics (SPH) technique. The improvements include an updated strength model and a friction model, which are successfully tested by a comparison with laboratory experiments. In the modeling of catastrophic disruptions of asteroids, a comparison between old and new strength models shows no significant deviation in the case of targets which are initially non-porous, fully intact and have a homogeneous structure (such as the targets used in the study by Benz and Asphaug 1999). However, for many cases (e.g. initially partly or fully damaged targets, rubble-pile structures, etc.) we find that it is crucial that friction is taken into account and the material has a pressure dependent shear strength. Our investigations of the catastrophic disruption threshold Q_D^* as a function of target properties and target sizes up to a few 100 km show that a fully damaged target modeled without friction has a Q_D^* which is significantly (5-10 times) smaller than in the case where friction is included. When the effect of the energy dissipation due to compaction (pore crushing) is taken into account as well, the targets become even stronger (Q_D^* is increased by a factor of 2-3). On the other hand, cohesion is found to have a negligible effect at large scales and is only important at scales $\lesssim 1$ km.

Our results show the relative effects of strength, friction and porosity on the outcome of collisions among small ($\lesssim 1000$ km) bodies. These results will be used in a future study to improve existing scaling laws for the outcome of collisions (e.g. Leinhardt and Stewart 2012).

Keywords: Asteroids, collisions, Collisional physics

1. Introduction

Collisions play a fundamental role in the formation and evolution of the planets and the small body populations of the Solar System. Models of the evolution of such populations (e.g. the Asteroid Belt) compute the time dependent size and velocity distributions of the

Email address: martin.jutzi@space.unibe.ch (Martin Jutzi)

objects as a result of both collisional and dynamical processes. A scaling parameter often used in such numerical models is the critical specific impact energy Q_D^* , which results in the escape of half of the target’s mass in a collision. The parameter Q_D^* is called the catastrophic impact energy threshold (also called the dispersion threshold). The specific impact energy is often defined as $Q = 0.5m_p v_p^2 / M_T$, where m_p , v_p and M_T are the mass and speed of the projectile and the mass of the target, respectively. The catastrophic disruption threshold Q_D^* is then given by the specific impact energy leading to a largest (reaccumulated) fragment M_{lr} containing 50% of the original targets mass. In recent studies (e.g. Stewart and Leinhardt 2009; Leinhardt and Stewart 2012), a more general definition of the specific impact energy was proposed which also takes the mass of the impactor into account:

$$Q_R = \frac{0.5m_p v_p^2 + 0.5M_T V_T^2}{M_{tot}} = \frac{0.5\mu V_i^2}{M_{tot}} \quad (1)$$

where $M_{tot} = m_p + M_T$ and $\mu_i = m_p M_T / M_{tot}$ and V_i is the relative velocity. The corresponding radius R_{C1} is defined as the spherical radius of the combined projectile and target masses at a density of 1 g cm^{-3} . According to this new definition, the catastrophic disruption threshold is then called Q_{RD}^* .

Values of Q_D^* (or Q_{RD}^*) have been estimated using both laboratory and numerical hydrocode experiments (see e.g. Holsapple et al. 2002; Asphaug et al. 2002). For the small body populations, the first suite of numerical calculations aimed at characterizing the catastrophic disruption threshold in both the strength regime and the gravity regime was performed by Benz and Asphaug (1999), who used a smoothed particle hydrodynamics (SPH) code (Benz and Asphaug, 1994, 1995) to simulate the breakup of basalt and icy bodies from centimeters-scale to hundreds kilometers in diameter. More recently, Leinhardt and Stewart (2009) computed Q_D^* curves using the hydro code CTH (McGlaun, 1990) to compute the fragmentation phase and the N-body code *pkdgrav* (Richardson et al., 2000) to compute the subsequent gravitational evolution of the fragments. In this study, the dependency of Q_D^* on the strength of the target was investigated. In a recent study by Jutzi et al. (2010), the effect of target porosity on Q_D^* was investigated using an extended version of the SPH code (Jutzi et al., 2008). In this study, the size and velocity distribution of the fragments was computed as well, using the *pkdgrav* code. Benavidez et al. (2012) performed a study of a large number of collisions among $R_t = 50 \text{ km}$ rubble pile bodies using the original SPH code by Benz and Asphaug (1994, 1995).

A numerical tool which is very suitable and has been often used to study disruptive collisions among rocky bodies in general, and was used in many of the above-mentioned asteroid disruption studies, is based on the SPH method. Over the last decades, the basic method has been extended by implementing additional physics (e.g. Benz and Asphaug 1994, 1995; Jutzi et al. 2008, 2009) with the goal to realistically model rocky bodies with various internal structures. In addition to improved constitutive models, models which mimic the complex macroscopic structure of rubble pile-like bodies have been used as well (e.g. Asphaug et al. 1998; Benavidez et al. 2012). Although the SPH models used in planetary sciences have been significantly improved over the last decades, they were still lacking aspects that can be important in some impact regimes. For example, previous SPH

strength models used the so-called von Mises yield criterion, which does not describe well the behavior of rocky materials which are known to have a pressure dependent shear strength. Furthermore, fully damaged material was treated as a strengthless 'fluid' in previous models. Finally, while self-gravity is included in the versions of the SPH codes used to model giant collisions, it is often not implemented in the SPH code versions which also include the physics of solid bodies.

In this paper, we present improvements of the SPH technique concerning the modeling of the disruption of strength dominated bodies. These improvements include a pressure dependent Drucker-Prager-like yield criterion, and a friction model for the damaged material. A few test cases are presented. Using the improved models, we then systematically study the effects various target properties (strength, porosity and friction) on the outcome of a disruptive collision (Q_D^*). In this study, we use targets with a homogeneous internal structure (i.e., it is assumed that the voids or inhomogeneities are sufficiently small that their distribution can be assumed uniform and isotropic over the relevant scales). In section 2, we present our numerical tool and the recent improvements and show two test cases. In section 3, the catastrophic disruption threshold Q_D^* is investigated as a function of material properties. In section 4, the results are discussed and future work is indicated.

2. Modeling

2.1. Previous SPH models

Benz and Asphaug (1994, 1995) extended the standard gas dynamics SPH approach to include an elastic-perfectly plastic material description (see, e.g. Libersky and Petschek 1991) and a model of brittle failure based on the one of Grady and Kipp (1980). In the fracture model, a state variable D (for damage) was introduced which expresses the reduction in strength under tensile loading and which varies between $D = 0$ and $D = 1$. Damage accumulates when the local tensile strain reached the activation threshold of a flaw. As stress limiter, the von Mises yield criterion was used. Finally the so-called Tillotson equation of state for basalt (Tillotson, 1962) was used to relate the pressure to the density and the internal energy. We refer the reader to the papers by Benz and Asphaug (1994, 1995) for a detailed description of this method. This code was then used for instance by Benz and Asphaug (1999) to make a first complete characterization of Q_D^* for basalt and ice targets at different impact speeds. The same version (in terms of material models) of the SPH code was used by Benavidez et al. (2012) to study collisions among rubble pile asteroids. Jutzi et al. (2008) extended the Benz and Asphaug (1994, 1995) method by implementing a sub-resolution porosity model based on the P-alpha model (Herrmann, 1969; Carroll and Holt, 1972). In this implementation, a distention parameter $\alpha = \rho_s/\rho$ is introduced where ρ is the bulk density of the porous material and ρ_s is the density of the corresponding solid (matrix) material. The distention α is defined as a function of pressure via the so-called crush-curve. It is used in the EOS to compute the pressure as a function of the matrix density. The porosity model was successfully tested by a comparison to laboratory experiments involving porous pumice (Jutzi et al., 2009). The SPH code used by Jutzi et al. (2008) and in the later

studies is a parallelized version (Nyffeler, 2004) of the original code by Benz and Asphaug (1994, 1995).

2.2. Recent improvements

In the original implementation of the strength and fracture model by Benz and Asphaug (1994, 1995), the pressure independent von Mises yield criterion was used. However, it is known that the shear strength of rocks is pressure depended (i.e., it increases with increasing confining pressure). A pressure dependent yield criterion often used to deal with rocky materials is the Drucker - Prager yield criterion

$$\sqrt{J_2} + \alpha_\phi I_1 - k_c = 0 \quad (2)$$

where I_1 is the first invariant of the stress tensor, J_2 is the second invariant of the deviatoric stress tensor α_ϕ , and k_c are Drucker Prager constants, which are related to the Coulomb's material constants (coefficient of friction μ and cohesion Y_0) (see e.g. Bui et al. 2008). For the implementation in our SPH code, we use $\sqrt{J_2}$ as a measure of the stress state, and we define a pressure dependent yield strength Y_i for intact rock following Collins et al. (2004):

$$Y_i = Y_0 + \frac{\mu_i P}{1 + \mu_i P / (Y_M - Y_0)} \quad (3)$$

where Y_0 is the shear strength at $P = 0$ and Y_M is the shear strength at $P = \infty$ and μ_i the coefficient of internal friction. As in the previous model, Y_i is temperature depended:

$$Y_i \rightarrow Y_i \left(1 - \frac{u}{u_{melt}} \right) \quad (4)$$

where u is the specific internal energy and u_{melt} the specific melting energy.

In the original model by Benz and Asphaug (1994, 1995), fully damaged material was treated as strength-less ("fluid"). As we shall see in section 2.3.1, this simplification leads to reasonably accurate results in the case of disruptive collisions between initially intact bodies. However, in many situations it is important to take into account the friction in the modeling of fully damaged (i.e, granular) material. This is certainly the case when we want to study collisions between rubble pile like, granular bodies, or to study the final shape of a body after an impact, and it is also expected to be important in the cratering regime of impacts. To model fully damaged rock (damage $D = 1$), which includes granular material in general, we use a yield strength

$$Y_d = \mu_d P \quad (5)$$

where μ_d is the coefficient of friction of the damaged material (Collins et al., 2004). Note that Y_d is limited to $Y_d \leq Y_i$. In case the modeling starts with a intact or partially damaged material, a smooth transition between the criterions (3) and (5) is used:

$$Y = (D - 1)Y_i + DY_d \quad (6)$$

where Y is limited to $Y \leq Y_i$.

If the measure of the stress state $\sqrt{J_2}$ exceeds Y , the components of the deviatoric stress tensor are reduced by a factor $Y/\sqrt{J_2}$. The yield strength given by (6) replaces the von Mises yield criterion used in the previous SPH models.

Finally, to compute the accumulation of damage D , a tensile brittle failure model based on the one of Grady and Kipp (1980) is used (see Benz and Asphaug (1994, 1995); Jutzi et al. (2008)). Damage accumulates when the local tensile strain ϵ_i reached the activation threshold of a flaw. Note that ϵ_i is obtained from the maximum tensile stress σ_i^t after a principal axis transformation.

The friction model described above (equation 5) assumes a constant friction coefficient. However, Jop et al. (2006) use a model with a rate dependent friction coefficient to reproduce experiments of dense granular flow. Their 3D model is based on a Drucker-Prager like yield criterion and a friction coefficient which is a function of the inertial number, defined as

$$I = |\dot{\gamma}|d/(P/\rho_s)^{0.5} \quad (7)$$

where P is the isotropic pressure, $|\dot{\gamma}|$ the second invariant of the strain rate tensor $\dot{\gamma}_{ij}$, d is the particle size and ρ_s is the particle density. Using I , the following law for a strain rate dependent friction coefficient was proposed

$$\mu(I) = \mu_s + (\mu_2 - \mu_s)/(I_0/I + 1) \quad (8)$$

where μ_s is the critical value of the friction coefficient at zero shear rate, μ_2 is the limiting value at high I , and I_0 is a constant. We implemented the relation (8) in the SPH code by replacing the constant coefficient μ_d in equation (5) by $\mu(I)$. However, as we shall see in section 2.3.1, it is not clear whether or not a strain rate depend friction coefficient allows to better reproduce the behavior of dense granular material. For this reason, our model uses a constant value

$$\mu(I) = \mu_d \quad (9)$$

unless indicated otherwise.

2.3. Tests

In this section, we present two test cases where we compare our model with experimental results. In the first case, we test the ability of our numerical tool to deal with fully fragmented (i.e., granular) material. For this, the collapse of a cliff of granular material is simulated. In the second case, we test the updated strength models by a comparison to laboratory impact experiments using porous gypsum targets (Okamoto and Arakawa, 2009).

2.3.1. Cliff-collapse

We model the collapse of a cliff of granular material and we use the results of experiments of Lajeunesse et al. (2005) to verify our friction model. Note that Holsapple (2013) performed a detailed study of the same problem using a continuum CTH code and Mohr-Coulomb and/or Drucker-Prager models. In the cliff collapse problem (see Holsapple 2013 for a detailed description), a granular material is initially constrained in a rectangular region

with height H_0 and length L_0 . The width is assumed to be large and assumed to be of no consequence. At the time $t = 0$, the wall on one side is removed and the material begins to flow down due to downward gravity g . Eventually, the flow ceases in a final run-out configuration with a width maximum height H and length L which depend on the properties (angle of friction) of the granular material. As it was found experimentally (e.g. Lajeunesse et al. 2005) as well as by a scaling analyses (Holsapple, 2013), the final scaled profile only depends on the initial height to length ratio and the angle of friction. The gravity and the height of the cliff only affect the time and length scales of the problem. This allows to model the problem using artificially large dimensions to avoid problems related to time-step restrictions (see Holsapple 2013). In the 3D calculation presented below, the dimensions (including the particle size d) are increased by a factor $\sim 10^5$.

Figure 1 shows a SPH code calculation of a cliff collapse compared with the results of the experiments by Lajeunesse et al. (2005). In the experiments, glass beads of different sizes, and various initial height to length ratios were used. When scaled by the characteristic length L_0 and time $\tau = \sqrt{H_0/g}$, it was found that the profile curves of the different experiments are barely distinguishable. These measured curves are represented by the blue line in Figure 1 at $t = \tau = \sqrt{H_0/g}$ and $t \rightarrow \infty$ (final profiles).

The results of our simulation using two different laws for $\mu(I)$ (Equations 8 and 9) are also shown in Figure 1. The parameters used in the first case are $\mu_s = \tan(20.9)$, $\mu_2 = \tan(32.76)$ and $I_0 = 0.279$ (Jop et al., 2006), and we use $\mu_d = \mu_s$ in the second case (constant friction coefficient). As it can be seen, both models reproduce very well the experimental results and there is no large difference between the model with a constant μ_d and a rate dependent $\mu(I)$. The reason is that in the cliff collapse problem studied here, the inertial number stays small and therefore $\mu(I) \sim \mu_s = \mu_d$. Our results suggest that in the flow regime investigated by this kind of experiment, both models work equally well, which also means that the global outcome of such events is well reproduced by using a single parameter μ_d .

2.3.2. Impact experiment

In Jutzi et al. (2009), the strength and fracture model by Benz and Asphaug (1994, 1995) in combination with a porosity model (Jutzi et al., 2008) was compared to laboratory impact experiments involving porous pumice. Here, we present a similar comparison test of our updated strength model using the results of a study by Okamoto and Arakawa (2009), who conducted impact experiments using porous gypsum spheres and a wide range of specific energies (from 3×10^3 J/kg to 5×10^4 J/kg) and investigated the resulting fragment mass distributions. We use run 1 and 2 of this study with the initial conditions indicated in Table 1.

As far as possible, we use material parameters which were measured for the target material. For the crush-curve, we use a quadratic form (see Jutzi et al. 2008) with $P_e = 1 \times 10^8$ dyn/cm² and $P_s = 4 \times 10^9$ dyn/cm², which gives a reasonable fit of the measured crush-curve of the gypsum material used in the experiments (Okamoto and Arakawa, private communication). Further more, the initial slope of the crush-curve in the elastic regime is chosen to match the measured longitudinal speed of sound of ~ 2 km/s (Okamoto and Arakawa, 2009). The Weibull parameters were varied in the simulations in order to obtain a match of

the largest remnant for one experiment (run 1). For the best fit model¹, $m = 9.5$ and $k = 8 \times 10^{37}$. For the other runs, the same values of m and k were used. Note that the minimum strain threshold for failure resulting from these parameters is about 3×10^{-5} which, multiplied by the Young modulus of 5.3×10^{11} , leads to an equivalent tensile strength of ~ 1.5 MPa. This value is slightly smaller, but of the same order as the measured tensile strength of ~ 2.5 MPa (Okamoto and Arakawa, 2009). In all cases, we use a coefficient of friction (damaged material) $\mu_d = 0.55$, a coefficient of internal friction (intact material) of $\mu_i = 1.5$ and a limiting yield strength of $Y_m = 3.5$ GP.

The results of our simulations compared to the experiments are presented in Figure 2. The experimental mass distribution is well reproduced in both cases. In Figure 3, the results of two simulations of run 1 using different yield criteria are compared. Our results indicate that, as long as the same limiting yield strength Y_m is used, the Drucker-Prager and the originally used von Mises yield criterion lead to very similar results. Besides the fragment size distribution, also the antipodal velocities of the fragments was measured. In the simulations, we obtain fragment velocities at the antipodal side varying between 4-5 m/s, which is in good agreement with the experimental values of ~ 5 m/s for run 1 and 2. At the center of the antipodal side, we obtain in the simulation also some fully damaged material which is ejected with slightly higher speeds (~ 10 m/s).

3. Catastrophic disruptions

The catastrophic disruption energy threshold Q_D^* was studied in the past for targets with various properties and structures using different previous versions of SPH codes (see Section 1). Here, we present results of a new study of Q_D^* using the updated material models (see Section 2.2) and investigating the relative effects of friction, porosity and strength. Self-gravity is included throughout these simulations using a grid-based gravity solver. To identify the largest fragment formed by reaccumulation of smaller pieces, we use an iterative procedure based on energy balance (Benz and Asphaug 1999). While this method does not allow to compute the whole size distribution of fragments, it was shown to be accurate in determining the largest reaccumulated fragment (Jutzi et al., 2010), as long as it has a significant size ($M_{lr}/M_{tot} > 10 - 20\%$).

3.1. Comparison to previous results

As a first step, we want to reproduce the results by Benz and Asphaug (1999) for solid basalt targets using the updated strength model. We find that, when starting with a intact homogenous solid target, both the old (von Mises) and new (Drucker-Prager like) strength models lead to the same (within a few %) results in terms of the catastrophic disruption threshold Q_D^* , as long as the same limiting yield strength Y_M is used. Note, however, that this is true only in the case where we start with a *intact* solid target (as it was done in the Benz and Asphaug 1999 study).

¹The values for m and k found in this study are different from the ones obtained by Benz and Asphaug (1994, 1995), because a different kind of material is considered here.

3.2. Investigation of various target properties

Our newly implemented material models allow us to investigate targets with various properties. In particular, thanks to the friction model, we can now also study collisions among initially fully or partly damaged targets (e.g, granular or rubble pile bodies). In order to systematically study the relative effects of friction, porosity and cohesion, we investigate the disruption threshold Q_D^* as a function of radius for spherical bodies with the following properties:

1. no friction, no crushing, no cohesion (purely hydrodynamic)
2. friction included, no crushing, no cohesion
3. friction and crushing included, no cohesion
4. friction, crushing and cohesion included (an intact porous body, similar to pumice)

In all cases, we start with the same initial density $\rho = 1.3 \text{ g/cm}^3$. Targets labeled 'no crushing' also have the same initial density, but there is no crushing of pore space (i.e., the initial distention is set to $\alpha_0 = 1$). In the cases that include crushing, a crush-curve with parameters for pumice is used (Jutzi et al., 2009) which means that the bodies are compacted (i.e., pore space is decreased) during the collision. In all the cases, we use a coefficient of friction (damaged material) $\mu_d = 0.8$ and a limiting yield strength of $Y_m = 3.5 \text{ GPa}$. In the case with cohesion (target 4), a coefficient of internal friction (intact material) of $\mu_i = 1.5$, and a cohesion $Y_0 = 100 \text{ MPa}$ are used.

For the simulations presented here, we use an impact velocity of 3 km/s and an impact angle of 45° . In Figure 4, the outcome of a collision using a target with radius of $R_t = 100 \text{ km}$, and an impactor with $R_p = 27 \text{ km}$ is shown at the time $t = 800 \text{ s}$ for the cases 1-4. As it can be seen in the cross sections shown in Figure 4, the degree of disruption and consequently the mass of the largest remnant M_{lr} after the collision strongly depend on the target properties. The 'hydrodynamic' target experiences the highest degree of disruption and the resulting largest remnant is the smallest ($M_{lr}/M_{tot} = 0.10$). In the case 2 where friction is included, the degree of disruption is much smaller and $M_{lr}/M_{tot} = 0.67$. In the cases 3 (with friction and crushing) and 4 (with friction, crushing and cohesion), the target is significantly compacted by the collision and the density is increased accordingly. In both cases, $M_{lr}/M_{tot} = 0.82$, which is larger than for the other targets. The outcome for runs 3 and 4 are very similar, which indicates that for disruptive collisions at this size scale, the effects of cohesion and tensile strength are negligible. On the other hand, porosity (energy dissipation by compaction) and friction (when starting with a damaged body) are very important. Figure 5 shows the disruption threshold Q_{RD}^* for the for targets 1 - 4 as a function of the combined target radius R_{C1} (defined in section 1). The Q_{RD}^* curves confirm the results discussed above for the $R_t = 100 \text{ km}$ case. The hydrodynamic target has by far the lowest Q_{RD}^* . The disruption threshold is significantly (5-10 times) higher when friction is included and is further increased (by a factor of 2-3) when the energy dissipation by compaction (pore crushing) is taken into account. The curves for the targets 3 and 4 are almost exactly the same for target sizes $R_t \geq 1 \text{ km}$. For smaller targets, cohesion and tensile strength start to affect the outcome and at even smaller scales, the largest fragments in the case of the cohesive targets are intact fragments rather than purely gravitational aggregates,

which explains the deviation of the curves of the targets 3 and 4 at small sizes (strength regime). As it was found in previous studies, the Q_{RD}^* increases with decreasing size for cohesive targets in the strength regime due to the size dependence of the tensile strength. In the Figure 5, we also plot one point representing the Q_{RD}^* for the $R_t = 50$ km rubble pile bodies used in the study by Benavidez et al. (2012). In this study, the rubble pile targets were constructed by filling the interior of a 100-km-diameter spherical shell with an uneven distribution of solid basalt spheres having diameters between 8 km and 20 km. It is important to note that this study was performed using an old version of the SPH code which does not include friction and which uses the von Mises yield criterion. As shown in Figure 5, the rubble pile targets used in the Benavidez et al. (2012) study have a very low Q_{RD}^* which even falls below the curve of our hydrodynamic targets.

4. Discussion and outlook

In this paper, we presented recent improvements of the SPH technique concerning the modeling of the disruption of strength dominated bodies. The updated models are able to reproduce the results of laboratory experiments very well. As for the modeling of catastrophic disruptions of asteroids, a comparison between old and new strength models shows no significant deviation in the case of targets which are initially non-porous, fully intact and have a homogenous structure (such as the targets used in the Benz and Asphaug 1999 study). In this case, the crucial parameter is the limiting yield strength Y_M (see also Leinhardt and Stewart 2009), and the details of the strength model (e.g., pressure dependent vs. pressure independent yield strength) do not play an important role. At large scales (> 1 km) the bodies get fully damaged in the disruptive collisions investigate here. It was found that in this case, the effect of friction in the post-impact flow (after the shock wave has damaged the material) is negligible. However, it is important to point out that this is not true in many other cases (e.g., initially partly or fully damaged targets, rubble-pile structures, etc.) in which it is crucial that the damaged material still has a pressure dependent shear strength (i.e, there is friction). As our investigations of the disruption threshold for different target properties show, an initially (pre-impact) fully damaged target modeled without friction or compaction has a Q_{RD}^* which is significantly (5-10 times) smaller than the Q_{RD}^* for the same target but where friction is taken into account. Interestingly, the rubble-pile targets used in the study by Benavidez et al. (2012) (who used an older version of the SPH code) seem to have a Q_D^* which is very low and even lies below our Q_D^* curve for the purely hydrodynamic bodies. Our results therefore indicate that these bodies represent something like a porous fluid rather than real rubble-pile bodies, which we believe should have a Q_D^* lying between the curves of the cases 2 and 3 in Figure 5. As our investigations show, when the effect of the energy dissipation due to compaction (pore crushing) is taken into account, the targets become stronger (Q_{RD}^* is increased by a factor of 2-3)². On the other hand, cohesion is only

²Note that Jutzi et al. (2010), in a comparison between porous pumice and solid basalt targets, found that at large scales (gravity regime), the non-porous targets have a higher Q_{RD}^* . This different behavior is due to differences in density and shear strength (Y_M)

important at small scales ($\lesssim 1\text{km}$) and has an negligible effect at larger scales. Our results therefore indicate that in the gravity regime, the crucial parameters are the crushing properties (crush-curve), friction (when starting with partly or fully damaged bodies) and the limiting yield strength Y_M (the effect of varying Y_M was already investigated by Leinhardt and Stewart 2009). Cohesion and tensile strength do not play an important role in this regime.

Our results clearly confirm that collisions between bodies of a few 100 km diameter can not be treated by just using 'hydrodynamic objects', even if they are fully damaged without cohesion. However, at a certain size, bodies are expected to be fully gravity dominated (due to the increase of overburden pressure with size); the transition to this regime will be subject of a future study.

The results presented here, as well as those from an ongoing, more general study (where a much larger parameter space will be covered) will be used to improve existing scaling laws for the outcome of collisions (e.g. Leinhardt and Stewart 2012).

Acknowledgments

We thank C. Okamoto and M. Arakawa for providing the data of the gypsum impact experiments, W. Benz and E. Asphaug for developing the original SPH models and P. Michel for fruitful discussions. We also thank two anonymous reviewers for valuable comments. M.J. is supported by the Ambizione program of the Swiss National Science Foundation.

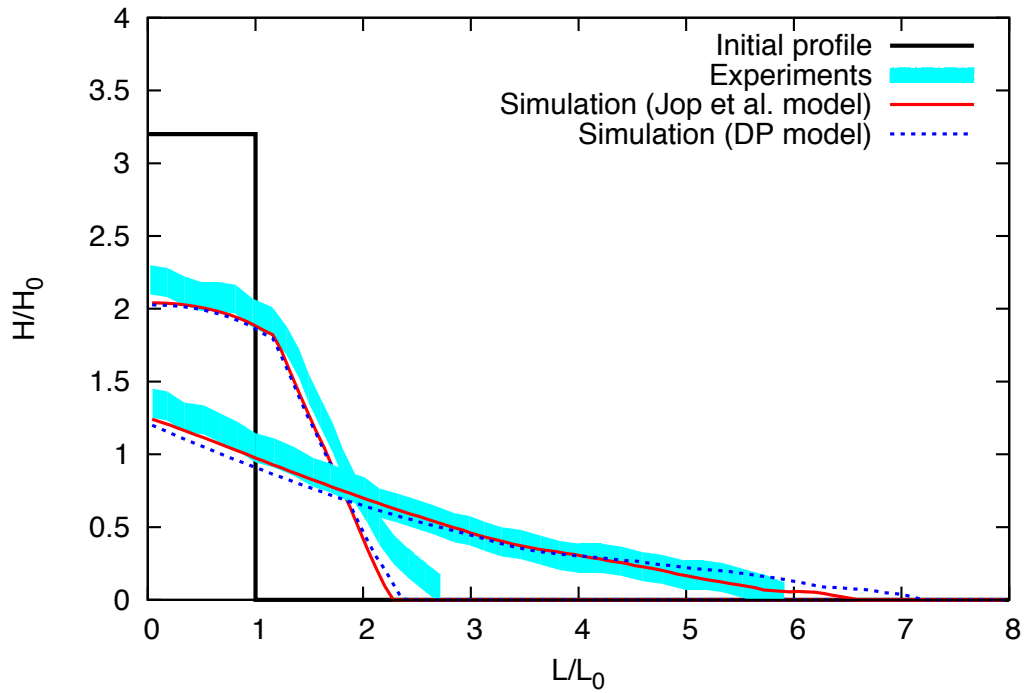


Figure 1: Collapse of a granular cliff. The height (y-axis) is normalized by the initial height H_0 and the length (x-axis) is normalized by the initial length L_0 . The experimental results by Lajeunesse et al. (2005) (light blue) are compared to the results of SPH code calculations using the model for dense granular flow by Jop et al. (2006) (solid red line) and a Drucker-Prager friction model with a constant friction coefficient (dotted blue line). The profiles are shown at the times $t = \tau = \sqrt{H_0/g}$ and $t \rightarrow \infty$ (final profiles).

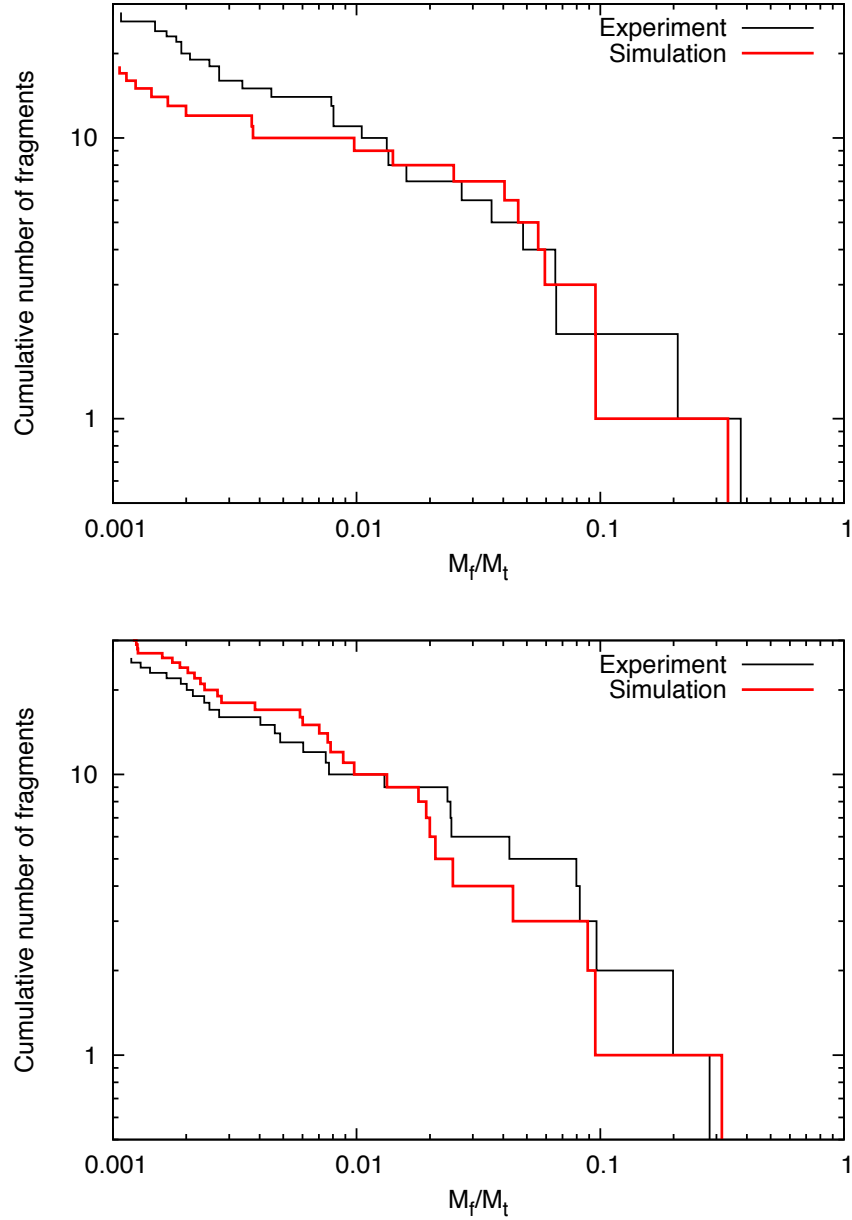


Figure 2: Cumulative fragment size distributions obtained in the impact experiment by Okamoto and Arakawa (2009) (black) and the SPH simulation (red). The targets consist of porous gypsum; the impact conditions correspond to run 1 (top) and run 2 (bottom) of the experiments described in Okamoto and Arakawa (2009).

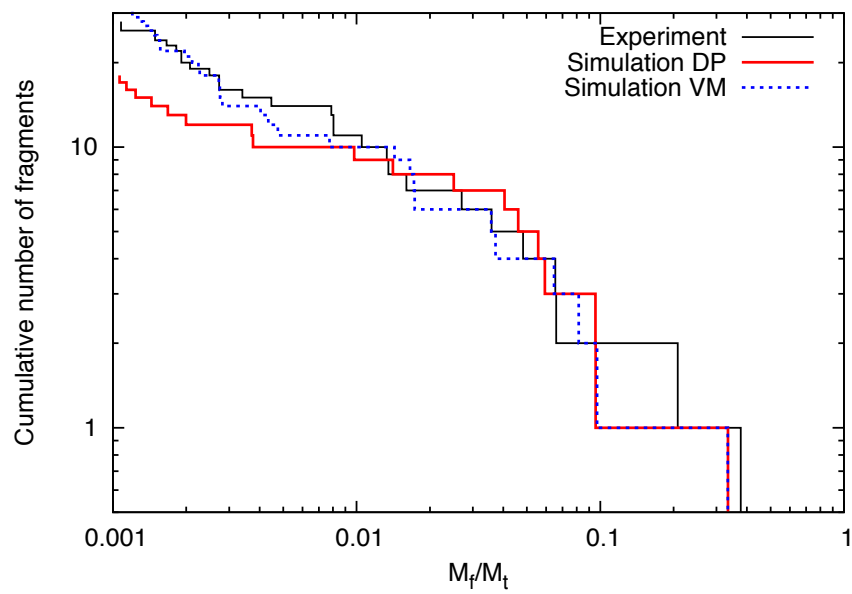


Figure 3: Same as Figure 2, but only run 1 is shown. In the SPH simulations, the Drucker-Prager (DP) and von Mises (VM) strength models are compared.

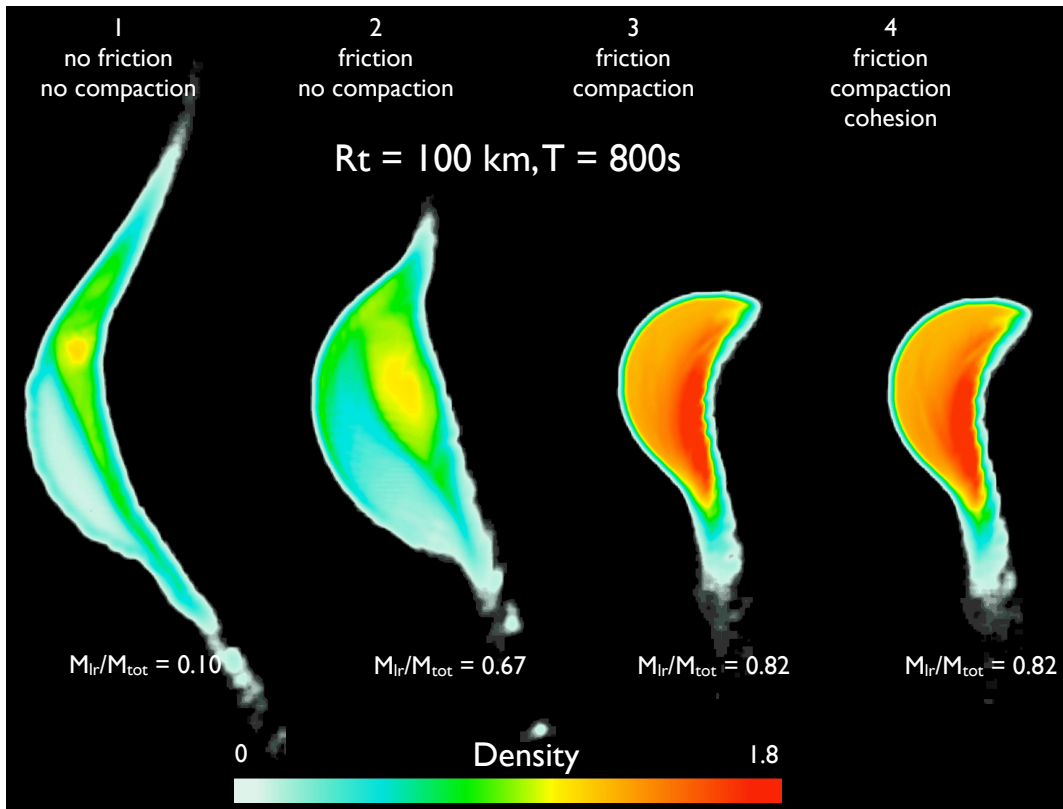


Figure 4: Cross-section of SPH simulations of collisions between a target with a radius of $R_t = 100\text{ km}$ and projectile of $R_p = 27\text{ km}$ with a relative velocity of 3 km/s and a 45° impact angle. Four different targets 1 - 4 (as indicated at the top) are investigated. The outcomes in terms of the degree of disruption, size of the largest remnant (M_{lr}/M_{tot}) and density increase strongly depend on the target properties.

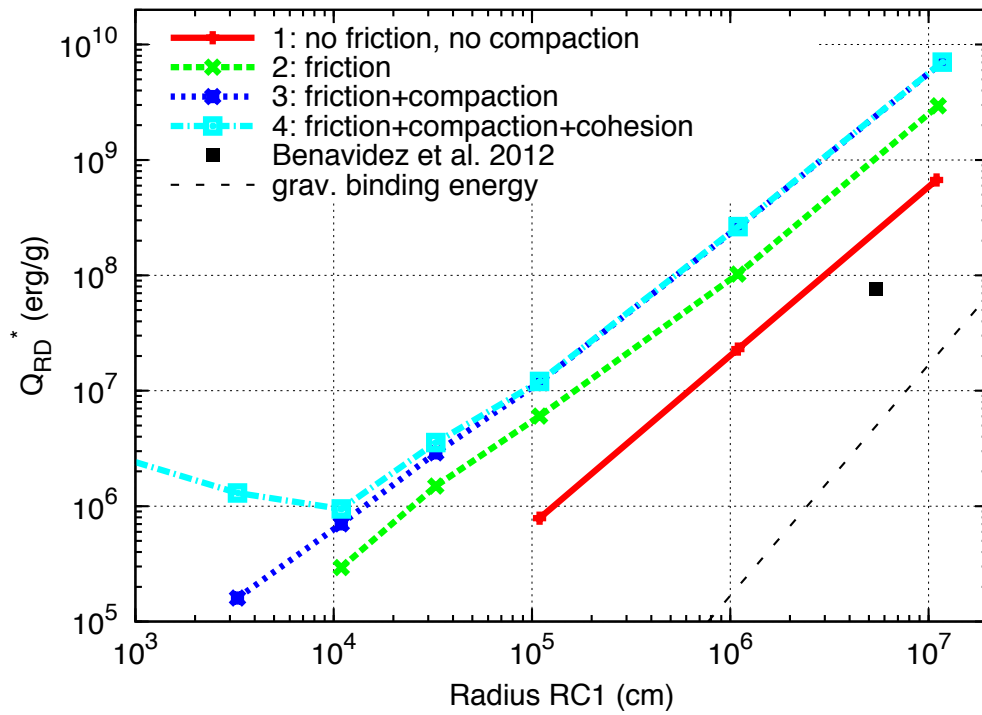


Figure 5: Catastrophic disruption threshold Q_{RD}^* as a function of the combined radius R_{C1} for various target properties. The Q_{RD}^* curves are the result of new SPH code calculations. The black point corresponds to the value of Q_{RD}^* estimated from simulations of "rubble-pile" collisions by Benavidez et al. (2012).

Table 1: Initial conditions and results of impact experiments (Okamoto and Arakawa, 2009). m_l/M_t is the largest fragment mass normalized by the original target mass (M_t). V_i , Q and V_a are the impact velocity, the specific energy and the antipodal velocity, respectively.

Run number	M_t (g)	Target diameter (mm)	m_l/M_t	$V_i(km/s)$	Q (J/kg)	$V_a(m/s)$
No. 1	12.1	28.8	0.377	3.33	3.21×10^3	5.08
No. 2	8.44	25.5	0.281	3.30	4.51×10^3	5.00

References

- Asphaug, E., Ostro, S.J., Hudson, R.S., Scheeres, D.J. and Benz, W. 1998. Disruption of kilometre-sized asteroids by energetic collisions. *Nature* 393, 437-440.
- Asphaug, E., Ryan, E.V., Zuber, M.T., 2002. Asteroid interiors. In: Bottke, W.F., Cellino, A., Paolicchi, P., Binzel, R.P. (Eds.), *Asteroids III*. Univ. of Arizona Press, Tucson, pp. 463-484.
- Benavidez, P. G. et al., 2012. A comparison between rubble-pile and monolithic targets in impact simulations: Application to asteroid satellites and family size distributions. *Icarus* 219, 57-76.
- Benz, W., Asphaug, E., Jan. 1994. Impact simulations with fracture. I - Method and tests. *Icarus* 107, 98.
- Benz, W. and Asphaug, E. 1995. Simulations of brittle solids using smooth particle hydrodynamics. *Computer Physics Communications* 87, 253-265
- Benz, W. and Asphaug, E. 1999. Catastrophic disruptions revisited. *Icarus* 142, 5-20
- Bui, H. H., Fukagawa R., Sako, K. and Ohno, S. 2008. Lagrangian meshfree particles method (SPH) for large deformation and failure flows of geomaterial using elasticplastic soil constitutive model. *Int. J. Numer. Anal. Meth. Geomech* 32, 1537-1570
- Carroll, M.M., Holt, A.C., 1972. Suggested modification of the $P - \alpha$ model for porous materials. *J. Appl. Phys.* 43, 759-761.
- Collins, G. S., Melosh, H. J., Ivanov, B. A 2004. Modeling damage and deformation in impact simulations. *Meteorit. Planet. Sci.* 39, 217-231
- Grady, D.E., Kipp, M.E., 1980. Continuum modelling of explosive fracture in oil shale. *Int. J. Rock Mech. Min. Sci. & Geomech. Abstr.* 17, 147-157.
- Herrmann, W., 1969. Constitutive equation for the dynamic compaction of ductile porous materials. *J. Appl. Phys.*, 40, 2490-2499.
- Holsapple, K. 2013. Modeling granular material flows: The angle of repose, fluidization and the cliff collapse problem. *Planetary and Space Science* 8283, 11-26
- Holsapple, K.A., Giblin, I., Housen, K., Nakamura, A., Ryan, E., 2002. Asteroid impacts: Laboratory experiments and scaling laws. In: Bottke, W.F., Cellino, A., Paolicchi, P., Binzel, R.P. (Eds.), *Asteroids III*. Univ. of Arizona Press, Tucson, pp. 443.
- Jop, P., Forterre, Y. and Pouliquen, O. 2006. A constitutive law for dense granular flows. *Nature* 441, 727-730.
- Jutzi, M., Benz, W., Michel, P. 2008. Numerical simulations of impacts involving porous bodies. I. Implementing sub-resolution porosity in a 3D SPH hydrocode. *Icarus* 198, 242-255
- Jutzi, M., Michel, P., Hiraoka, K, Nakamura, A.M., Benz, W. 2009. Numerical simulations of impacts involving porous bodies. II. Comparison with laboratory experiments. *Icarus* 201, 802-813
- Jutzi, M., Michel, P., Benz, W., Richardson, D.C. 2010. Fragment properties at the catastrophic disruption threshold: The effect of the parent body's internal structure. *Icarus* 207, 54-65
- Lajeunesse, E., Monnier, J. B. and Homsy, G.M. 2005. Granular slumping on a horizontal surface. *PHYSICS OF FLUIDS* 17, 103302
- Leinhardt, Z.M., Stewart, S.T. 2009. Full numerical simulations of catastrophic small body collisions. *Icarus* 199, 542559
- Leinhardt, Z.M., Stewart, S.T. 2012. COLLISIONS BETWEEN GRAVITY-DOMINATED BODIES. II. THE DIVERSITY OF IMPACT OUTCOMES DURING THE END STAGE OF PLANET FORMATION. *The Astrophysical Journal*, 751:32.
- Libersky, L.D. and Petschek, A.G., 1991. Smooth Particle Hydrodynamics with strength of materials. In: Trease, Fritts, Crowley (Eds.), *Proc. Next Free-Lagrange Method*, Lecture Notes in Physics 395, Springer-Verlag, Berlin, pp. 248-257.
- McGlaun, J. 1990. CTH - a three dimensional shock physics code. *Int. J. Impact Eng* 10.
- Nyffeler, B. Modelling of Impacts in the Solar System on a Beowulf Cluster. PhD Thesis, University of Bern.
- Okamoto, C. and Arakawa, M. 2009. Experimental study on the collisional disruption of porous gypsum spheres. *Meteoritics & Planetary Science* 44, Nr 12, 19471954
- Richardson, D.C., Quinn, T., Stadel, J., Lake, G., 2000. Direct large-scale N-body simulations of planetesimal dynamics. *Icarus* 143, 4559.

Stewart, S.T. and Leinhardt, Z.M. 2009. VELOCITY-DEPENDENT CATASTROPHIC DISRUPTION CRITERIA FOR PLANETESIMALS. *The Astrophysical Journal*, 691:L133L137

Tillotson, J.H., 1962. Metallic equations of state for hypervelocity impact. General Atomic Report GA-3216, July 1962.